



Accredited for compliance with
ISO/IEC 17025.
Accreditation Number: 2735

REPORT NO: 12087
10 November 2017

COMPRESSION TEST REPORT

Prepared for:
Multipod International

Specimen: Multipod International – Paver pedestal
Test Procedure: Procedure EQP019
Test Date: 08/11/2017
Load rate: 1mm/sec
Platen size: 250mm

Test	Specimen	Sample diameter (mm)	Sample height (mm)	Maximum force (N)	Maximum force (Kg)	Failure point	Pedestal configuration
1	Multipod International – 003 Paver pedestal	195	95	172997*	17635*	NOTE 1	Fully lowered position, Figure 1.
2		195	168	10506	1071	Central column thread	Lower column raised, upper column collapsed, screw retracted, Figure 2.
3		195	251	8076	823	Central column thread	Lower column raised, upper column raised, screw retracted, Figure 3.
4		195	272	8315	848	Top screw thread	Lower column raised, upper column raised, screw partially extended, Figure 4.
5		195	309	7613	776	Top screw thread	Lower column raised, upper column raised, screw fully extended, Figure 5.
6	Multipod International – 001 Paver pedestal	195	18	207108*	21112*	NOTE 1	Fully lowered position, Figure 6.
7		195	35	33709	3436	NOTE 1	Fully raised position, Figure 7.

Note 1: Failure point not visible without destructive analysis

* Note 2: Test was ceased and maximum load was recorded once visual deformation of sample was observed. Internal failure of the sample may have occurred before test was ceased.

Tested by:

Mechanical and Testing Engineer

Reviewed by:

Senior Consulting Engineer

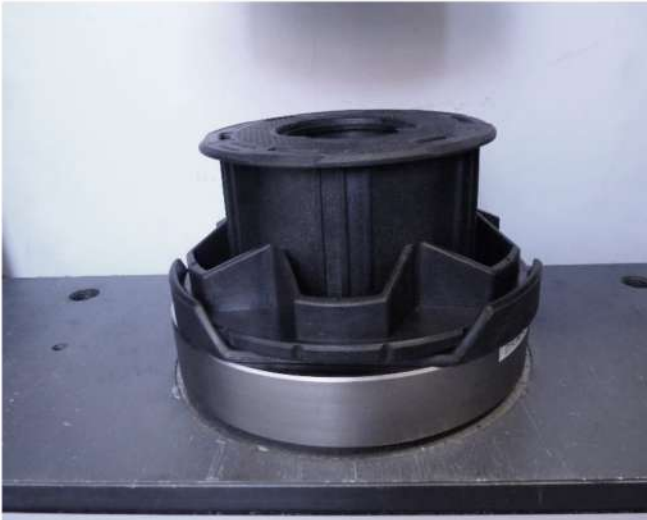


Figure 1: Sample 1 during test



Figure 2: Sample 2 during test



Figure 3: Sample 3 during test



Figure 4: Sample 4 during test



Figure 5: Sample 5 during test



Figure 6: Sample 6 during test



Figure 7: Sample 7 during test